



SAINT THOMAS
THE APOSTLE
ROMAN CATHOLIC SCHOOL

SCHOOL OFFICE

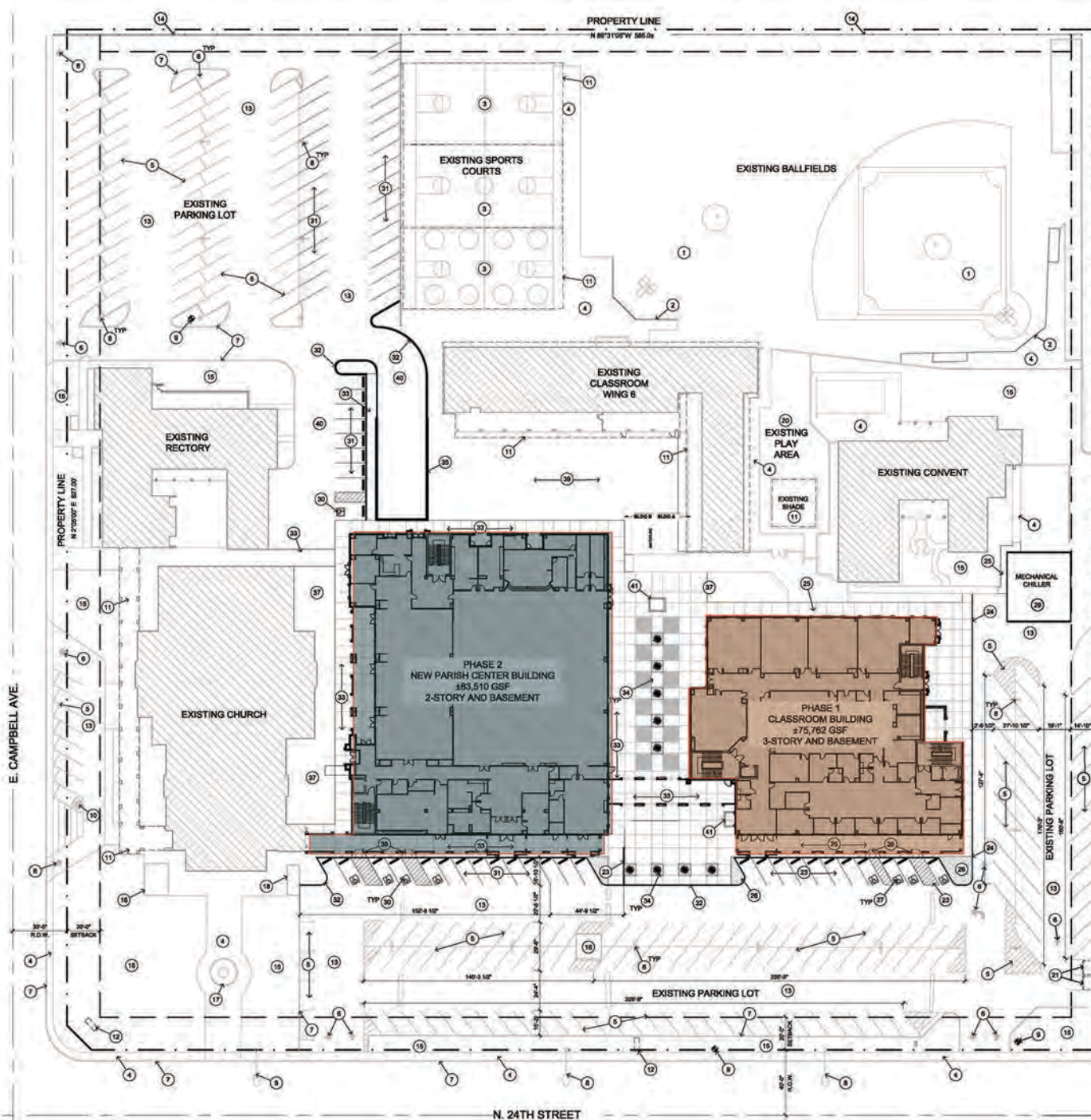
Project Phases

PHASE 1: New Classroom Building (+ Preschool)

- Preschool (Completed 2016)
- Classrooms for K-8
- STEM + Tinker Classrooms
- Cafeteria + Kitchen
- Music Lab
- Art Studio
- Library
- Administrative Offices + Meeting Spaces
- Nurse's Station
- Outdoor Commons

PHASE 2: Gymnasium + Parish Social Hall

- Adoration Chapel
- Gymnasium + Locker Rooms
- Social Hall + Warming Kitchen
- Teen + Youth Ministry Spaces
- Community Meeting Rooms
- St. Vincent de Paul Pantry
- Administrative Offices + Meeting Spaces
- Catechesis of the Good Shepherd
- Gift Shop + Bookstore
- Underground Parking

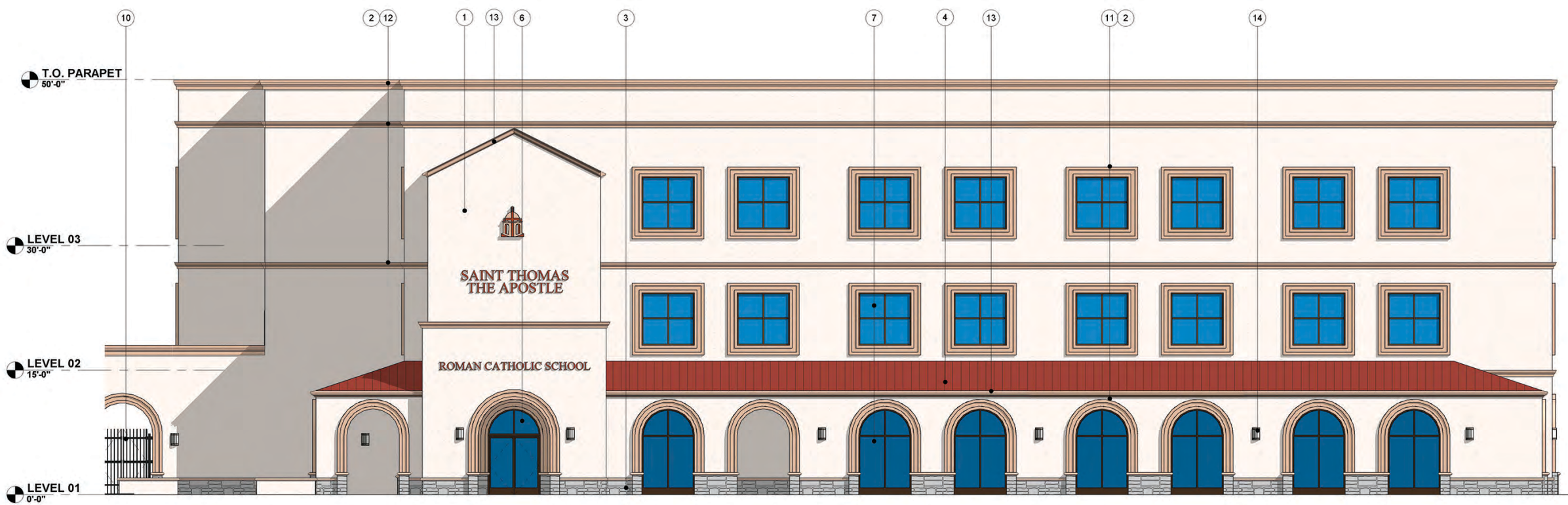


PHASE 1

- New Classroom Building
- Approx. 75,000 GSF
- 4 floors (basement + 3 floors above grade)

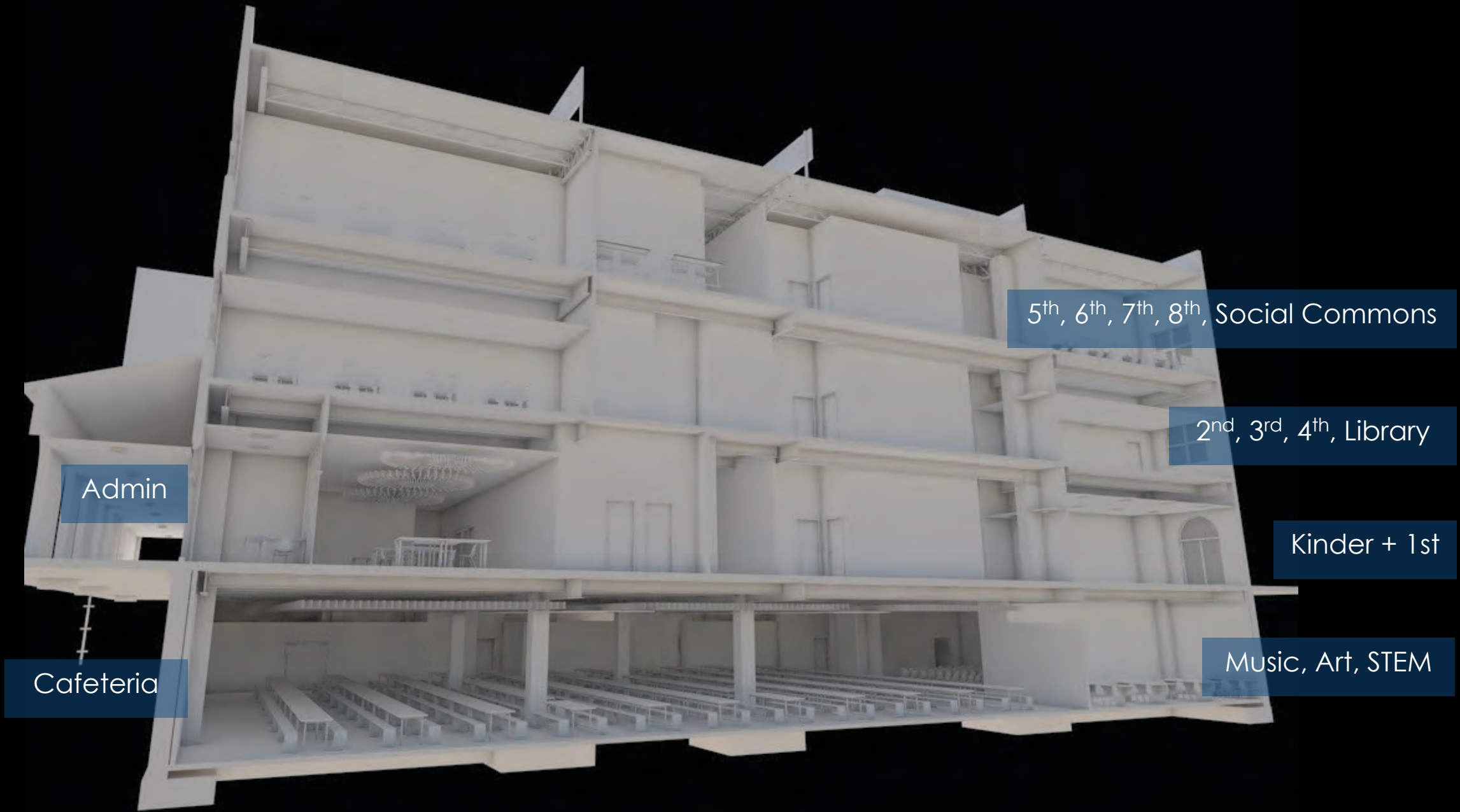
PHASE 2

- Adoration Chapel
- Gymnasium + Parish Social Hall
- Approx. 83,000 GSF
- 3 floors (basement parking + 2 floors above grade)



New Classroom Building East Elevation





Admin

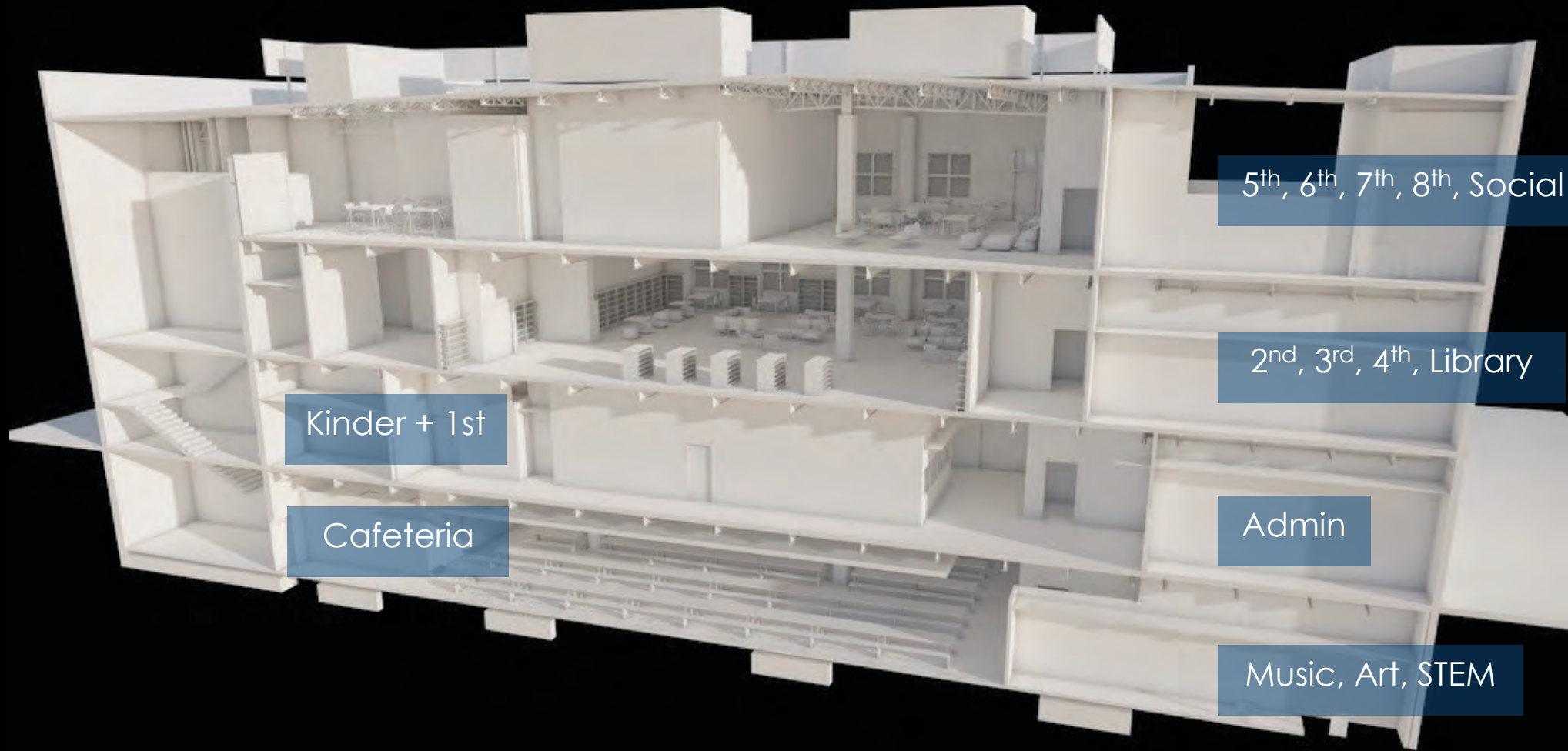
5th, 6th, 7th, 8th, Social Commons

2nd, 3rd, 4th, Library

Kinder + 1st

Music, Art, STEM

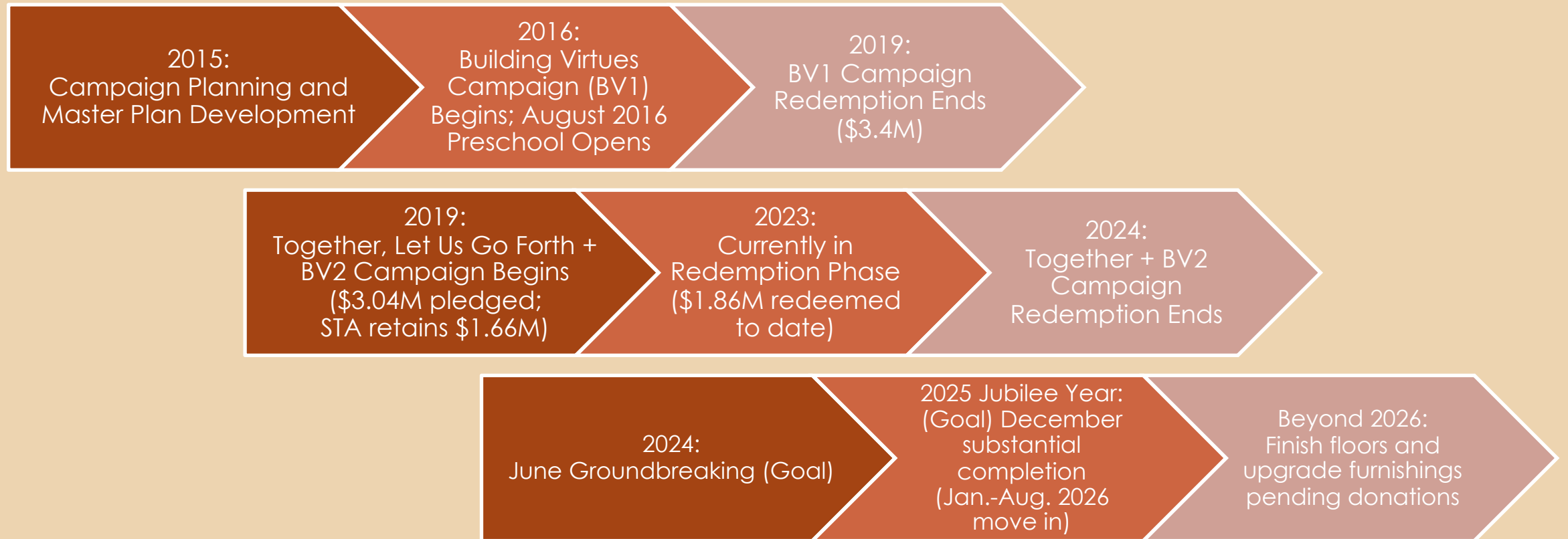
Cafeteria







Timeline



What is our Goal? / How much Raised?

Shell:

- \$15M
 - Finished exterior
 - Framed interior

Full Build Out:

- \$21M
 - Estimate \$1.5M per floor above shell

Sources of Funding:

- Project Specific Donations: \$3M ✓
- + Other Cash Available: \$4M ✓
- + Loan Financing: \$5M ✓
- + New Fundraising
(BV Construction Drive): \$3M+



How much should I give?



- For those of you that have completed your pledge to our previous campaigns, extend your commitment by supporting our Building Virtues Construction Drive. **If you have been giving monthly, are you able to continue? If you made a one-time donation, are you able to match that gift or a portion of it?**
- For those of you that have yet to join us, prayerfully consider what a **sacrificial gift** looks like for your family. Are you a **"Planned Giver"**, designating money from your budget to give? Are you a **"Priority Giver"**, giving to God before other expenses? Are you a **"Percentage Giver"**, giving a percentage, not a dollar amount? Are you a **"Progressive Giver"**, increasing the percentage you give regularly?
- **Match the Pastor:** Since 2016, Fr. Kunkel has been giving \$100/month to the building fund and pledges to continue until our project is completed. Did you know that if each parish and school family gave \$100/month, we could generate \$2.4 million in just this year alone?!
- **Match the Principal:** Our school principal, Mary Coffman, has given over \$25,000, giving back her raises each year to the building fund.

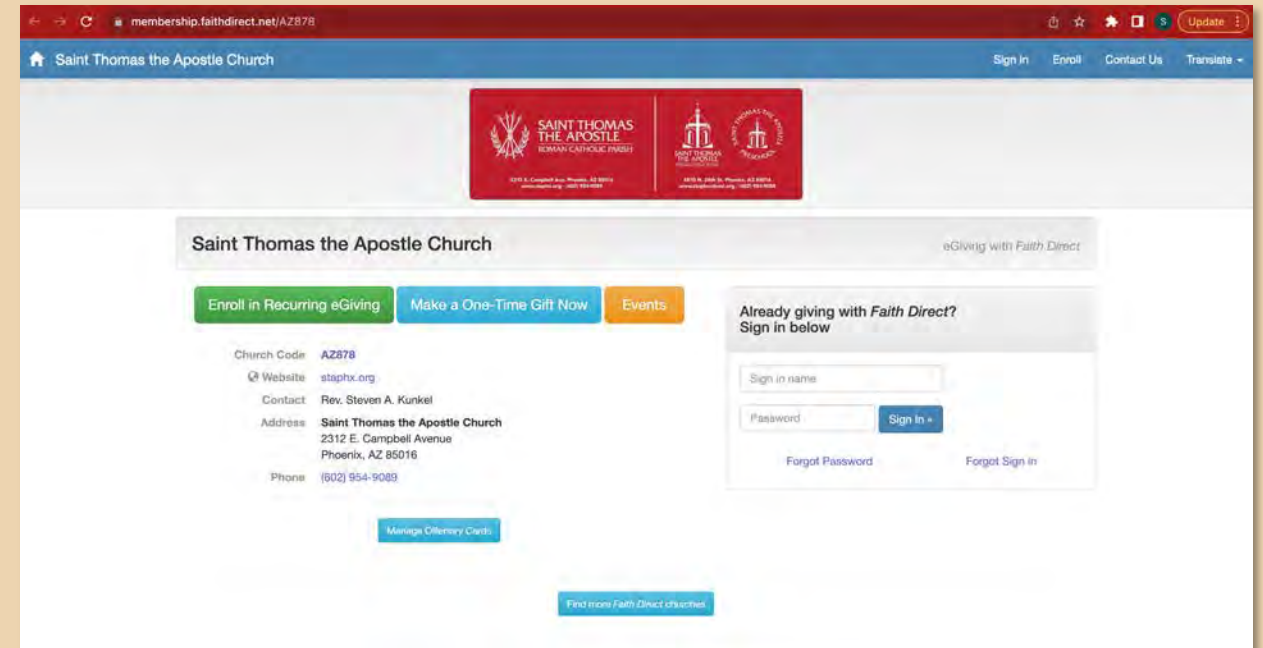
How do I give?



Go to: membership.faithdirect.net/AZ878

Enroll in Recurring eGiving

Make a One-Time Gift Now



Gifts of Securities, please contact Bri Cooney bcooney@staphx.org (602) 368-5222 Direct